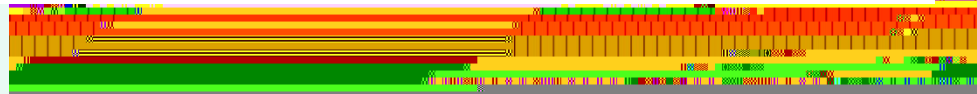




Eagle
Mountain View
Saginaw
Independent
School District

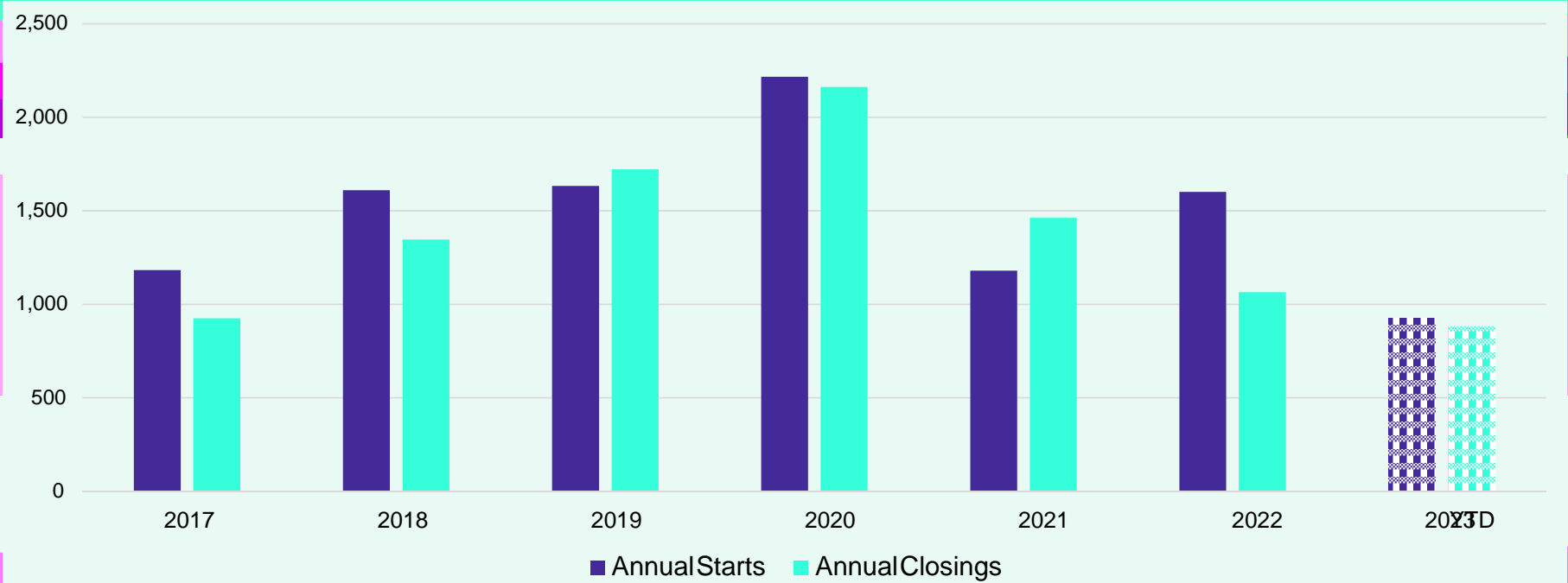
Demographic Report





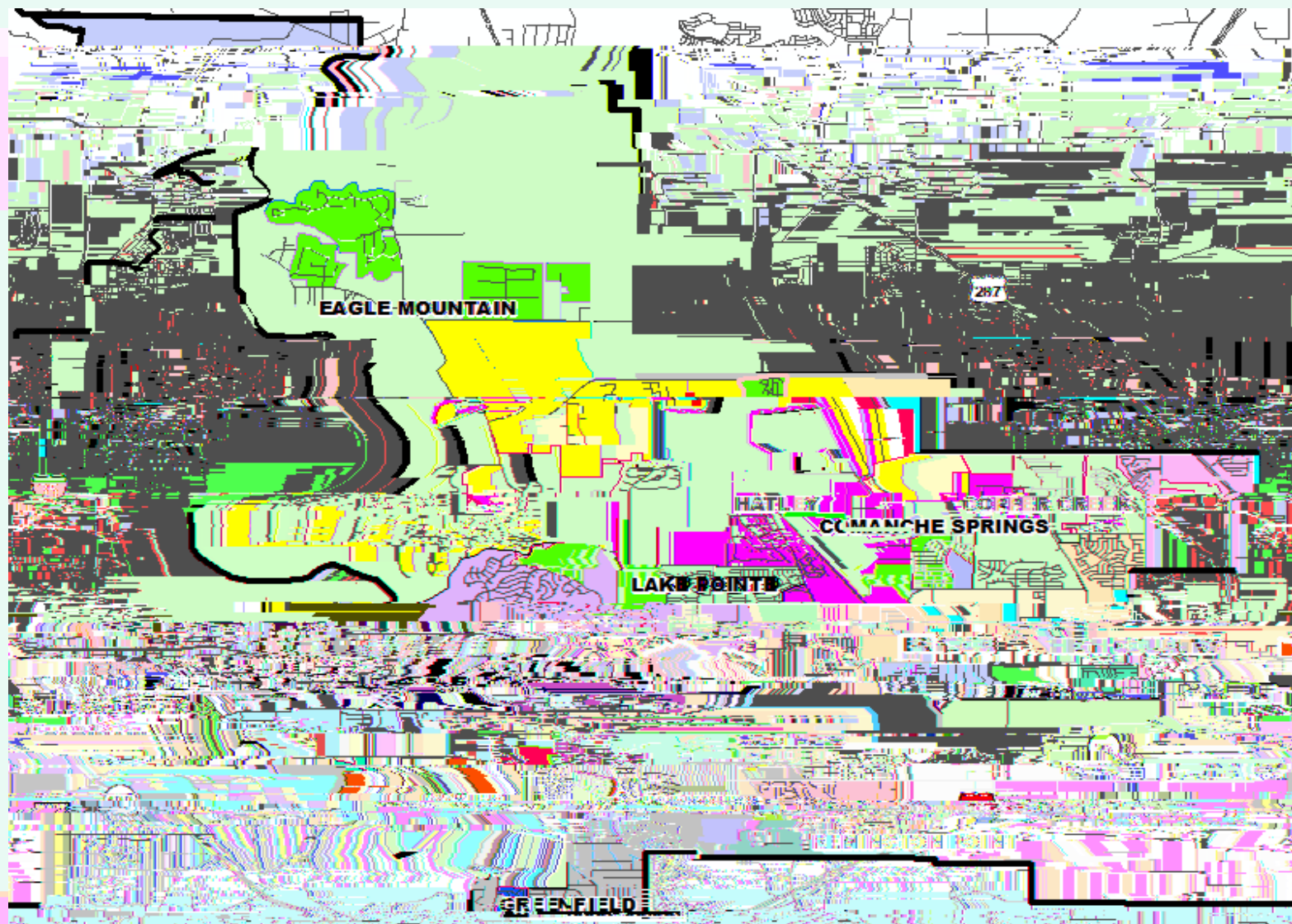
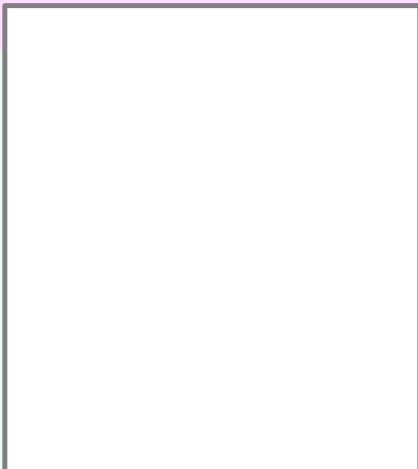


District New Home Starts and Closings by Quarter



Starts	2017	2018	2019	2020	2021	2022	2023	Closings	2017	2018	2019	2020	2021	2022	2023
1Q	179	389	351	530	321	292	398	1Q	154	295	285	340	473	161	374
2Q	368	411	439	593	356	413	528	2Q	204	310	483	567	425	256	505
3Q	412	293	442	514	312	390		3Q	243	374	512	664	300	383	
4Q	224	517	401	580	191	506		4Q	324	367	441	591	264	265	
Total	1,183	1,610	1,633	2,217	1,180	1,601	926	Total	925	1,346	1,721	2,162	1,462	1,065	879



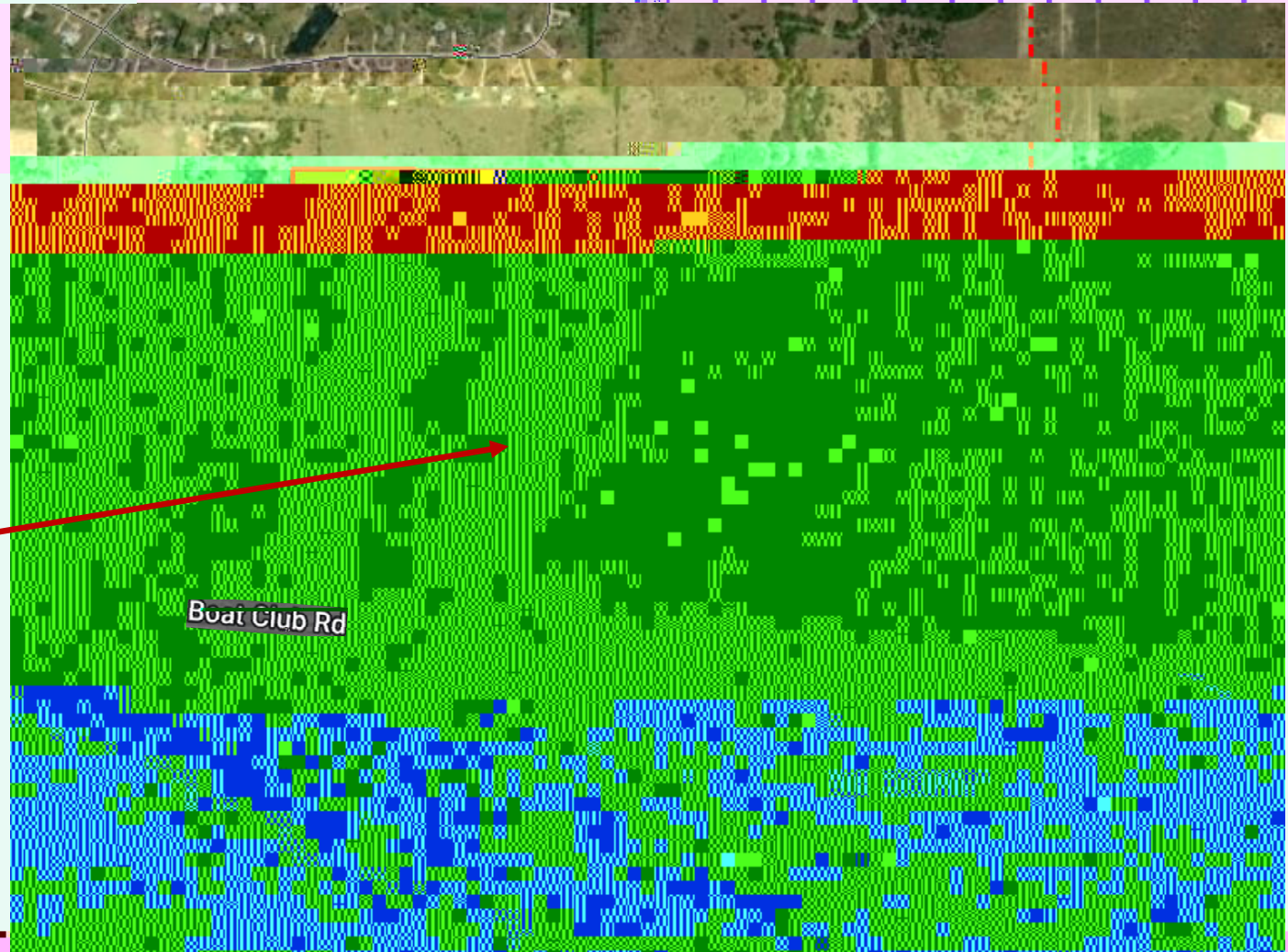




Residential Activity

Eagle Ridge

- 800 total homes
- 300 acre development with groundwork currently underway; specific details on new community sketchy at this point



Ten Year Forecast by Elementary Campus

Campus	Capacity	ENROLLMENT PROJECTIONS												
		2021/22	Fall 2022/23	2023/24	2024/25	2025/26	2026/27	2027/28	2028/29	2029/30	2030/31	2031/32	2032/33	
HAFLE DEVELOPMENT CENTER	374		365	352	359	371	379	387	372	388	408	424		
BRYSON ELEMENTARY	736		548	463	465	490	508	533	568	590	604	610	610	
CHISHOLM RIDGE ELEMENTARY	803	664	720	712	702	700	695	675	685	698	701	715	725	
COMANCHE SPRINGS ELEMENTARY	781	550	553	538	584	592	608	623	650	652	663	660	653	
COPPER CREEK ELEMENTARY	803	565	648	715	725	720	758	761	744	745	737	737	742	
DOZIER ELEMENTARY	803	663	725	731	741	762	758	767	770	781	777	765	763	
EAGLE MOUNTAIN ELEMENTARY	758	431	501	529	587	658	751	922	1,081	1,223	1,389	1,560	1,751	
ELKIN ELEMENTARY	736	581	646	668	659	651	638	620	611	608	611	616	620	
GILLILAN ELEMENTARY	691	501	481	491	501	518	530	532	523	518	513	507	502	
GREENFIELD ELEMENTARY	803	701	689	680	681	677	675	676	693	715	736	757	776	
HATLEY ELEMENTARY	803	0	0	228	285	358	431	511	588	646	721	788	855	
HIGH COUNTRY ELEMENTARY	758	556	567	593	623	635	628	623	626	641	652	659	654	
LAKE COUNTRY ELEMENTARY	803	686	671	661	683	691	725	764	822	876	890	906	913	
LAKE POINTE ELEMENTARY	781	585	660	691	690	693	712	730	735	745	743	745	741	
NORTH BROOK ELEMENTARY	781	551	571	609	605	614	627	612	609	602	607	606	609	
PARKVIEW ELEMENTARY	781	561	554	580	602	626	665	693	718	730	750	756	754	
REMINGTON POINTE ELEMENTARY	758	557	551	558	557	559	588	622	621	626	629	625	622	
SAGINAW ELEMENTARY	558	341	327	326	326	312	310	293	300	307	311	313	316	
WILLOW CREEK ELEMENTARY	870	598	634	677	703	719	710	705	706	705	708	721	727	
ELEMENTARY TOTALS	14,181	10,045	10,411	10,802	11,078	11,347	11,696	12,049	12,422	12,795	13,149	13,469	13,775	
Elementary Percent Change		7.35%	3.64%	3.76%	2.56%	2.42%	3.08%	3.02%	3.10%	3.01%	2.77%	2.43%	2.27%	
Elementary Absolute Change		688	366	391	276	269	349	353	373	374	354	320	306	

Ten Year Forecast by Secondary Campus

Campus	Capacity	ENROLLMENT PROJECTIONS											
		2021/22	Fall 2022/23	2023/24	2024/25	2025/26	2026/27	2027/28	2028/29	2029/30	2030/31	2031/32	2032/33
CREEKVIEW MIDDLE SCHOOL	1,078		846					944	900	862	850	863	
HIGHLAND MIDDLE SCHOOL	1,050		731						40	913	873	866	
PRAIRIEVIEW MIDDLE													

TheYearAhead

